

Formulas in Link Master

With the increased use of HortVision's Quick Measure Calipers System to monitor fruit sizing, we have added the ability to enter a formula into Link Master to calculate a field (such as fruit weight) from other fields (such as fruit length and diameters). Simply select the formula to apply from the Formula list at the bottom right of the "Import Data" tab, and the calculations will be performed automatically and the results shown in the right-most column of the table. When you save the data, the calculated information will be saved just like the other variables.

Link Master

File Maintenance Help

Editing File ==> d:\orchmstr\dbases\monitor\newdata\demo2.odb

Orchard: Orchard 2 Variety: Braeburn
 Block: 1 Date: 2/11/95
 Owner: Bloggs Season: 1996

Edit New File
Commit Data

ID	Diam1	Diam2	Weight
1	63.45	50.9	96.32
2	75.9	51.85	120.86
3	71.61	46.93	92.22
4	70.26	40.07	64.87
5	78.32	52.08	126.08
6	79.9	55.36	146.37
7	47.01	33.39	29.00
8	46.68	32.37	26.97
9	60.35	40.34	56.08
10	89.33	69.71	267.01
11	52.16	41.33	50.63
12	44.51	29.75	21.49
13	39.53	27.05	15.54
14	59.23	34.52	39.64
15	68.34	42.48	71.23
16	78.45	48.33	107.95
17	82.48	53.75	142.24

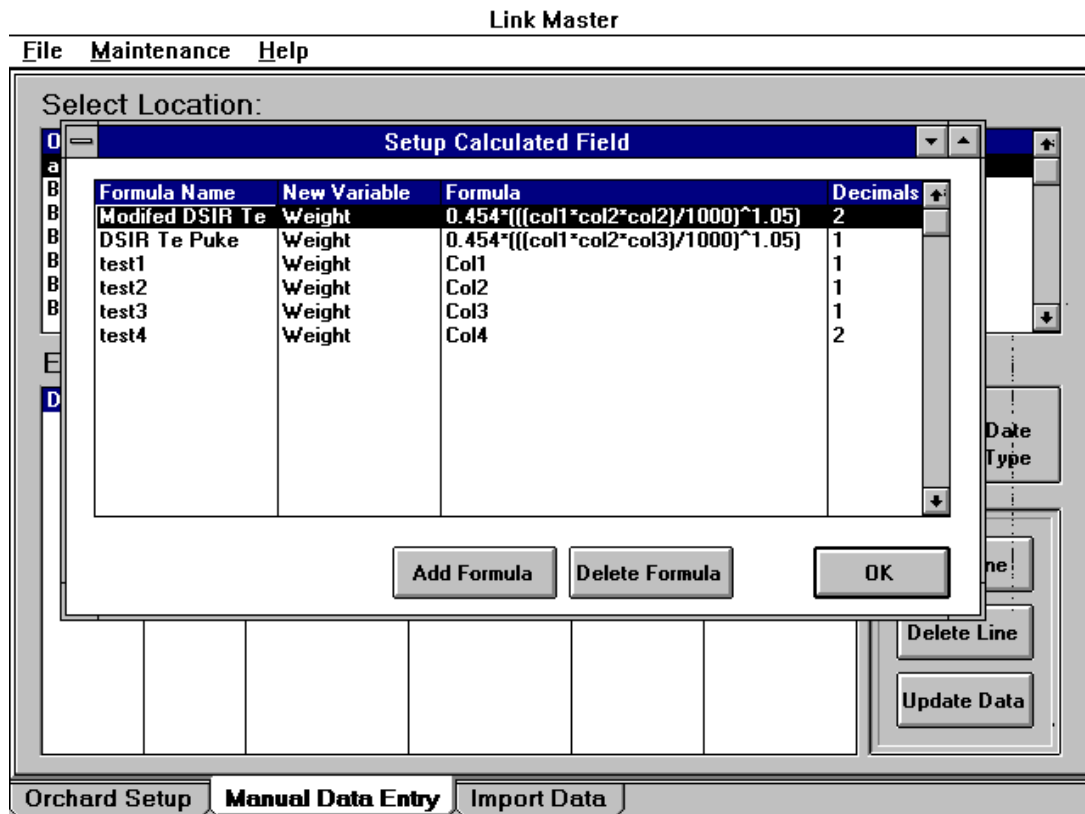
Imported Data

Y
 X

Formula: **Modified DSIR Te Puke**
 $Weight = 0.454 * (((col1 * col2) / 1000)^{1.05})$

Orchard Setup Manual Data Entry Import Data

You can create and modify formulas by selecting “Formulae” from the “Maintenance“ menu item which opens a form like the one shown here:



The “Formula Name” is the name that will be displayed in the select list of formulas. The “New Variable” column is the name for the information you are creating with this formula - you will need to create this “Measurement Type” using the Maintenance menu. The “Decimals” column is the number of decimal places to show and to save for the calculated information. The “Formula” column holds the actual formula to be applied.

Formulas refer to the columns by the name of “Col1” through “Col6” for the 6 data columns in the data table. You have access to a full range of operators:

Arithmetic	Comparison	Logical
Exponentiation (^)	Equality (=)	Not
Negation (-)	Inequality (<>)	And
Multiplication and division (*, /)	Less than (<)	Or
Integer division (\)	Greater than (>)	Xor
Modulo arithmetic (Mod)	Less than or equal to (<=)	Eqv
Addition and subtraction (+, -)	Greater than or equal to (>=)	Imp
String Concatenation (&)		

You also have access to a full range of mathematical functions:

Abs	Fix	Now
Asc	Iif	Right or Right\$
CCur	Int	RTrim or RTrim\$
CDbl	IsDate	Sgn
Chr or Chr\$	IsNull	Space or Space\$
CvDate	IsNumeric	Sqr
DateAdd	LCase or LCase\$	Str or Str\$
DateDiff	Left or Left\$	String or String\$
DatePart	Len	Trim or Trim\$
DateSerial	Log	UCase or UCase\$
DateValue	LTrim or LTrim\$	Val
Day	Mid or Mid\$	Weekday
Exp	Month	Year

We have plans for the next release of Link Master to further strengthen the formulas section, including providing better error handling than is currently available in this section. If you have ideas for improving this section, please let us know so they can be brought into the planning process.